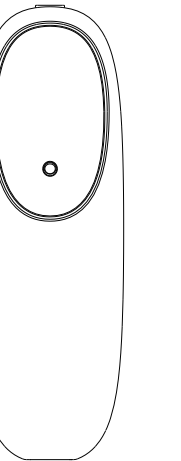


INSTRUCTION



P205 Product User Manual

Product Introduction

This aroma diffuser adopts intelligent Bluetooth APP control and an innovative design that can break through the large amount of fog. Focusing on the research and development of air vortex noise reduction technology, the actual noise is lower than similar products, and it has innovatively broken through the ultra-long fragrance performance. The air pump uses high-performance professional brushes to make the air pump life up to 1000 hours. The product is widely used in indoor spaces such as hotel, toilet, bar, airport and home. The integrated design of the body and plug can start the fragrance experience directly by plugging into the socket.

Precautions

Please read this instruction manual in detail and keep it properly before using the device.

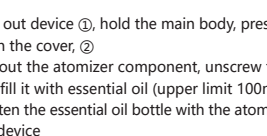
- Do not use overloaded power sockets, damaged power cables or adapters, otherwise it may endanger your safety. To avoid fire hazards, please replace it in time if you find the above situation.
- If you are not a technician, please do not try to modify, disassemble, or repair the device to avoid damage to the device. If the device is abnormal, please check whether it is operated according to normal use devices, or please check machine according to troubleshooting. If it cannot be solved, please contact the seller in time.
- The device must not be inverted or tilted when in use. If the device needs to be transported to other places, please maintain and clean the device first (see device maintenance for details) before packaging and transporting to avoid essential oil penetration and damage to the device.
- Please maintain and clean the device regularly to ensure that the device is in the best working condition.

Special instructions for the use of essential oils

- Please stop the device for 2 minutes before adding essential oils again, and wait for the essential oils in the atomizer head to flow back before unscrewing the essential oil bottle.
- It is recommended to control the amount of essential oil added within 45 days each time to avoid deterioration of essential oils due to oxidation.

Product parameters

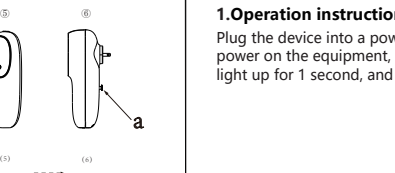
Dimension	H217*D70*W61(mm)
Capacity	100ml
N.W	440g
Coverage	300m ³
Voltage	100-240V
Power	2.5W
Noise	≤38dB
Packing size	W242*D122*H85(mm)



Accessories

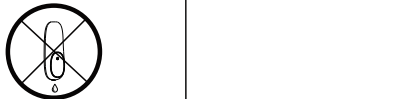
Name	Product Manual	Flat Washer
Thumbnail	User manual	Flat Washer

Installation Guide



- Take out device ①, hold the main body, press the switch on top of the device, open the cover, ②
- Pull out the atomizer component, unscrew the essential oil bottle clockwise, and fill it with essential oil (upper limit 100ml). ③
- Tighten the essential oil bottle with the atomizer body counterclockwise, Cover the device
- Plug it into the socket, adjust bolt a so that it is against the wall/socket, open the mobile app to connect Bluetooth, set the working time, the device starts to work. ⑥

Precautions for use



Control panel instructions

1.Operation instructions:

Plug the device into a power socket (100-240V), power on the equipment, the indicator light will light up for 1 second, and the buzzer will beep briefly.



2.Panel function description:

The device can connect to Bluetooth when powered on. If the mobile phone cannot search for the device, the device fails or the program is abnormal, you can press the reset button for 5 seconds. The device will be restored to factory settings after hearing the buzzer.

a: Turn on GPS/positioning and Bluetooth on the mobile phone, and allow the corresponding function usage permissions of the APP. When pairing is successful, the device Bluetooth indicator is always on.

b: When pairing is successful, the Bluetooth indicator is always on. At this time, if the APP and the device are interacting with each other, the Bluetooth indicator will flash and the buzzer will beep briefly.

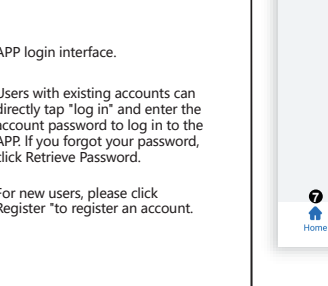
The detailed operation of Bluetooth is as follows

1.Download the APP

Scan the following QR code to download the APP through browser, or download the APP "Smart Life -Smart Living" through APP STORE/GOOGLE PLAY.

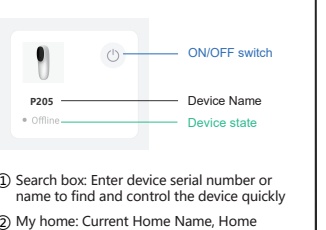


2. Sign up and Log in



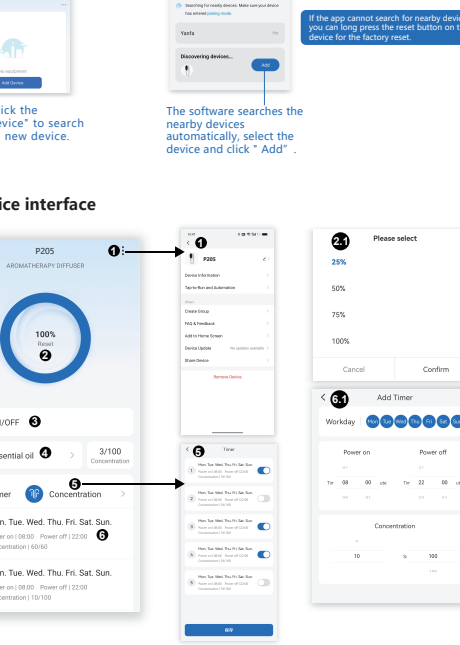
- APP login interface.
- Users with existing accounts can directly tap "log in" and enter the account password to log in to the APP. If you forgot your password, click Retrieve Password.
- For new users, please click Register "to register an account.

3.Interface htroduction



- Search box: Enter device serial number or name to find and control the device quickly
- My home: Current Home Name, Home Management, Create a home
- Message: All operation message
- *+: Add device or scan the code
- Hidden menu: Device Management and Room Management
- Device: Current device name, device state, ON/OFF switch, device setting program
- Home interface management button
- Knowledge interface buttons
- My interface settings button

4.Device interface



- Device menu: Modify device name, remove device, create other groups, etc;
- Essential oil volume: The current percentage of essential oil volume can be set, and the system will calculate the remaining oil volume automatically when the device is working.
- ON/OFF switch: Indicate the current device state; power switch.
- Essential oil name: The name of the essential oil can be modified.
- Working mode: Customize and select the working mode. Click the timer and the working mode as per 6.1 interface to modify the setting program.
- Working mode seting: Indicate the current working mode. Click the working mode to modify the workday ON/OFF time and concentration and then click "Save" button. There are 5 working modes for setting.

Device maintenance

In order to ensure the best fragrance diffusion effect, please check and maintain the device every six months. When you need to change to a new fragrance or the fragrance diffusion effect is weakened, you should also maintain the device:

- Unscrew the used essential oil bottle.
- Pour an appropriate amount of alcohol into the essential oil bottle and clean it.
- Pour a small amount of alcohol after cleaning, , install the essential oil bottle on the device, and turn on the device for 5 to 8 minutes.
- Turn off the power after cleaning the device.

Warranty card

This warranty card is a quality guarantee and must be filled out truthfully.

Warranty card 1	Warranty card 2
Warranty date	Warranty date
Fault description	Fault description
Verification date	Verification date
Repair results	Repair results
Maintenance personnel signature	Maintenance personnel signature

After-sales service

The device is under warranty for one year from the date of sale, but the outer shell, power supply, wires, external sealing rings and other consumable parts are not covered. Damage caused by human or accidental damage is also not covered by the warranty. Paid repairs will be required beyond the free warranty period. If you encounter any after-sales problems, you can contact the authorized sales service providers in each region, or contact our sales center.

Troubleshooting

Before preparing to repair the device, please try to solve the following problems according to the following methods first.

Device failure	solution	Device failure	solution
Device does not work.	- Please check whether the power socket can be powered normally. - The working procedure set by the device, whether it is currently in working time.	Oil leakage	- Whether the essential oil bottle and the atomizer head are tightened. - Whether the atomizer head seal deformed or damaged. - Whether the atomizer head damaged.
No atomization. Small atomization.	- Whether the air pump is working, whether there is airflow at the atomization outlet. - Whether the atomization core and oil suction pipe are loose or blocked. - Whether the air nozzle seal is damaged or detached.	Abnormal noise	- The air pump is loose, re-fix the air pump. - The air pump is damaged, replace it with a new one.